

## New blog from our Chair: The importance of Cognitive Load Theory (CLT)

Dan Williams, Chair of the SET Management Board, SET Fellow and lecturer, presents the first of his quarterly blogs for SET. He explains why he believes there is one learning theory all teachers should be aware of and what teachers can do to reduce cognitive load.



## QTLS and the post-Brexit skills challenge

In this week's TES Tim Weiss, SET Director of Membership, writes about how there is no one-size-fits-all route into teaching, and how QTLS adds more flexibility and variety to suit differing circumstances, and to respond to the ever increasing need for high-quality technical education. [Read more here.](#)

---

## Career focus

Our online career focus hub offers information about how to progress your career as a teacher, trainer or assessor and advice on how to access support when you need it. We also publish career stories from SET members to give you an insight into career journeys within the education and training sector. If you would like to feature in 'My career story', please email [membership.communications@etfoundation.co.uk](mailto:membership.communications@etfoundation.co.uk) to find out how to get involved.

### Latest articles include:

- [Applying for a new job](#): Podcast and article on how to make your application form shine through to the interview stage.
- [Supporting your health and wellbeing](#): Learn how to manage your workload and access support so you can improve your work-life balance.



### New blog: Aspiration and NEET young people

SET member Paul Smith discusses the barriers to aspiration amongst learners classed as 'not in education, employment or training' (NEET).

[Read the blog](#)



### New article: Supporting learners' mental health in further education and skills

A look at how colleges and FE providers are supporting students to look after and seek mental health care by fostering positive learning environment and accessing the latest tools and services.

[Find out more](#)



### New article: The impact of digital literacy in educational spaces

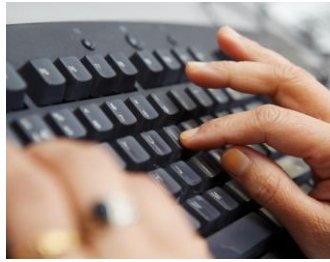
This article explores the ways educational providers can make digital development a key part of digital literacy, from running extra classes to trading textbooks for search engines.

[Click here for more](#)



### **New blog: Behaviour management**

When it comes to behaviour management in the classroom, theory and classroom practice doesn't seem to be enough, according to Chris Holden, lecturer in learner engagement. Read the [first](#), [second](#), [third](#) and [fourth](#) instalments from our four-part blog series.



### **QTLS registration window**

The QTLS registration window is open until 31 May 2017. [Check your eligibility and register on our website](#). You can find out more about QTLS by [watching our webinar recording](#). If you are supporting someone in their QTLS application, you might want to complete our [Introduction to Mentoring programme](#).



### **Engage with research using your new benefits**

If you haven't already, have a look at your new benefits aimed at helping you engage more with [research](#). You now have access to SET's online research library, powered by [EBSCO](#). The research journal collection comprises articles from more than 1,300 education journals, 530 e-books and monographs and 2,300 education-related conference papers. You also have access to our interactive "[Research Map](#)" tool, Research section in [InTuition](#) and annual research supplement.

---

## What's on

### **Webinars:**

- Small things that make a big difference in attendance (Part 1), 9 May 2017, 12.30-1.30pm. [Find out more and register.](#)
- Small things that make a big difference in attendance (Part 2), 18 May 2017, 12.30-1.30pm. [Find out more and register.](#)

Recordings of these will be available after the event. [Find these and all of our other webinar recordings in our resources and webinars section.](#)

**Local network groups:**

- Hampshire, 8 June 2017

[Book your place or register your interest in future events.](#)

---



**Tel:** 0800 093 9111

157-159 Buckingham Palace Road,  
London SW1W 9SP

InTuition extra is one of the benefits of your [Society for Education and Training](#) membership.

You can manage your mailing options online. [Log in](#) to the Society for Education and Training website and select Mailing Options to change your preferences. Please note that if you have unsubscribed, changed your membership status or mailing options via email, this may take some time to be reflected on our electronic mailing system. We thank you for your patience.

The Society for Education and Training accepts no responsibility for content included on any of the external websites linked to via its e-newsletters, including media and partner organisation websites.

©ETF Services Ltd – Company No. 9511877 – a wholly owned subsidiary of  
The Education & Training Foundation Registered Charity No. 1153859

[Your privacy](#) | [Unsubscribe](#)